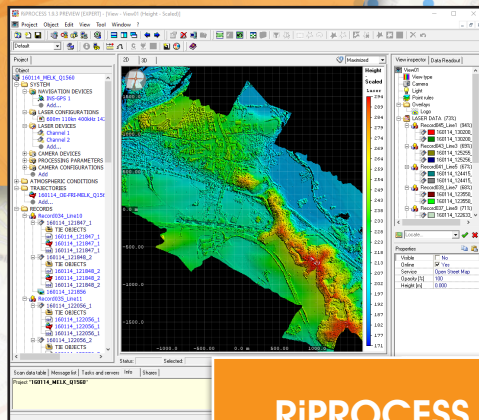


# RiMAP

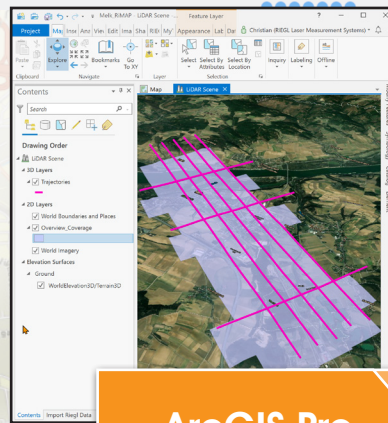
## Esri ArcGIS Pro Add-In

RiMAP is a *RIEGL* software extension to Esri's desktop GIS application ArcGIS Pro. RiMAP leverages the GIS environment and tools to provide workflows to improve efficiencies for *RIEGL* customers who wish to analyze, store, manage, visualize, and/or share the information of their *RIEGL* kinematic LiDAR data collections.

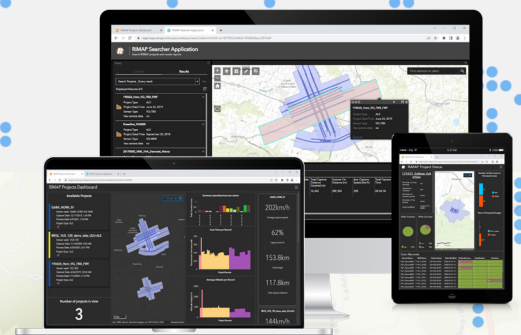
Acquisition metadata, including the parameters used and the processing state of LiDAR projects, are extracted and displayed in easy to manage web applications.



RiPROCESS



ArcGIS Pro



ArcGIS Online

# RiMAP

*RIEGL* Software Extension

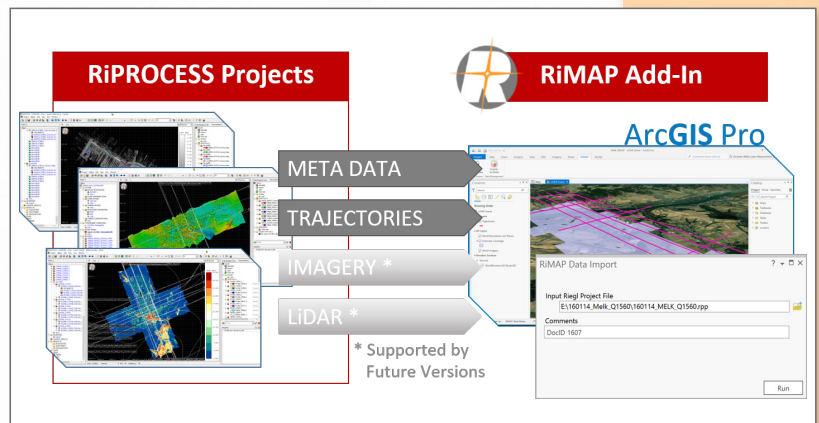


[www.riegl.com](http://www.riegl.com)



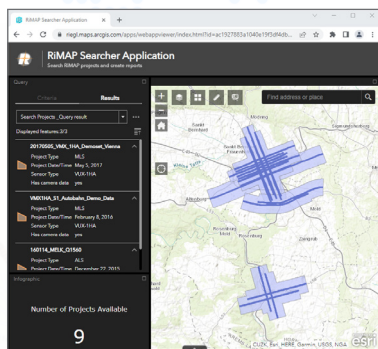
## Ingest data to ArcGIS Pro

RiMAP parses RiPROCESS projects and imports metadata, processing state, and trajectory information into ArcGIS Pro. The data is stored in a file geodatabase and managed within ArcGIS Pro.

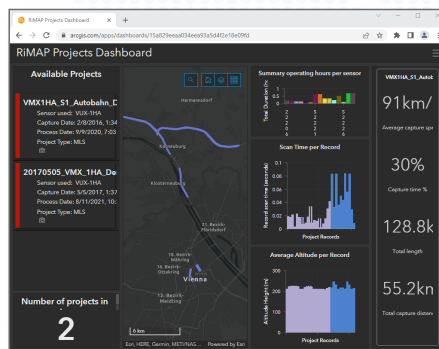


## Publish to ArcGIS Online

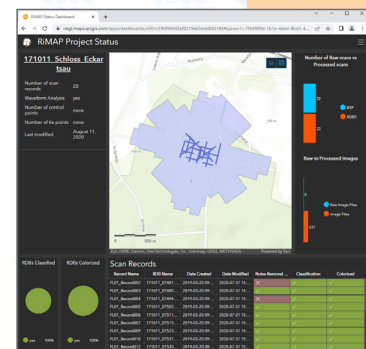
The geodatabase is published to ArcGIS Online along with a WebApp and two Dashboards for understanding, analysis, and visualization of RIEGL LiDAR data collections.



RiMAP Searcher App



RiMAP Project Dashboard



RiMAP Project Status

## System Requirements

RiPROCESS version 1.9.0 and above, ArcGIS Pro 2.9, ArcGIS Online subscription



Scan this QR-code for RiMAP download